

HARRIS PAGE & ASSOCIATES

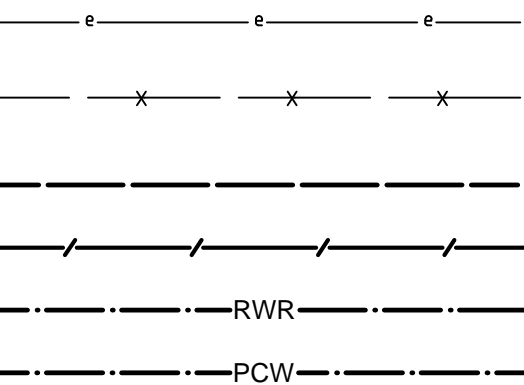
STORMWATER DA SUBMISSION

ABBOTSLEIGH

1666 PACIFIC HIGHWAY WAHROONGA NSW 2076

STORMWATER SERVICES LEGEND

PIPEWORK



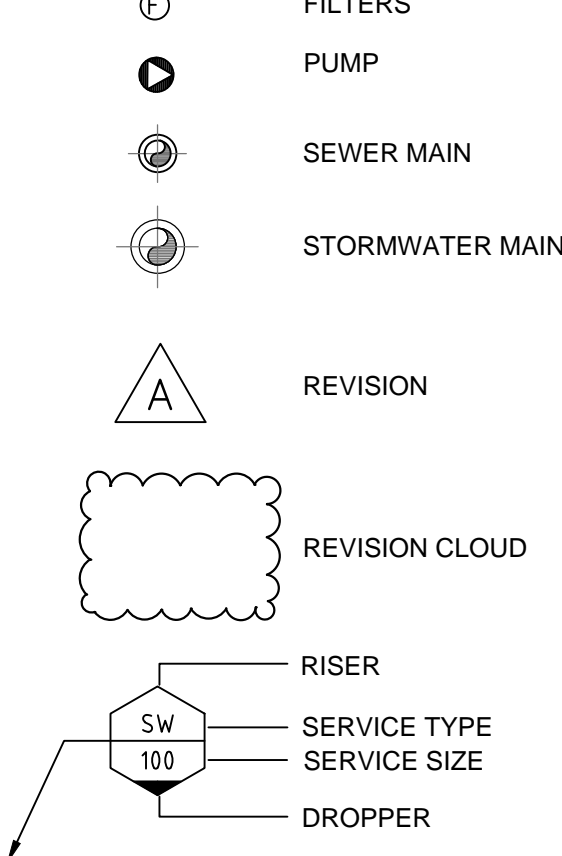
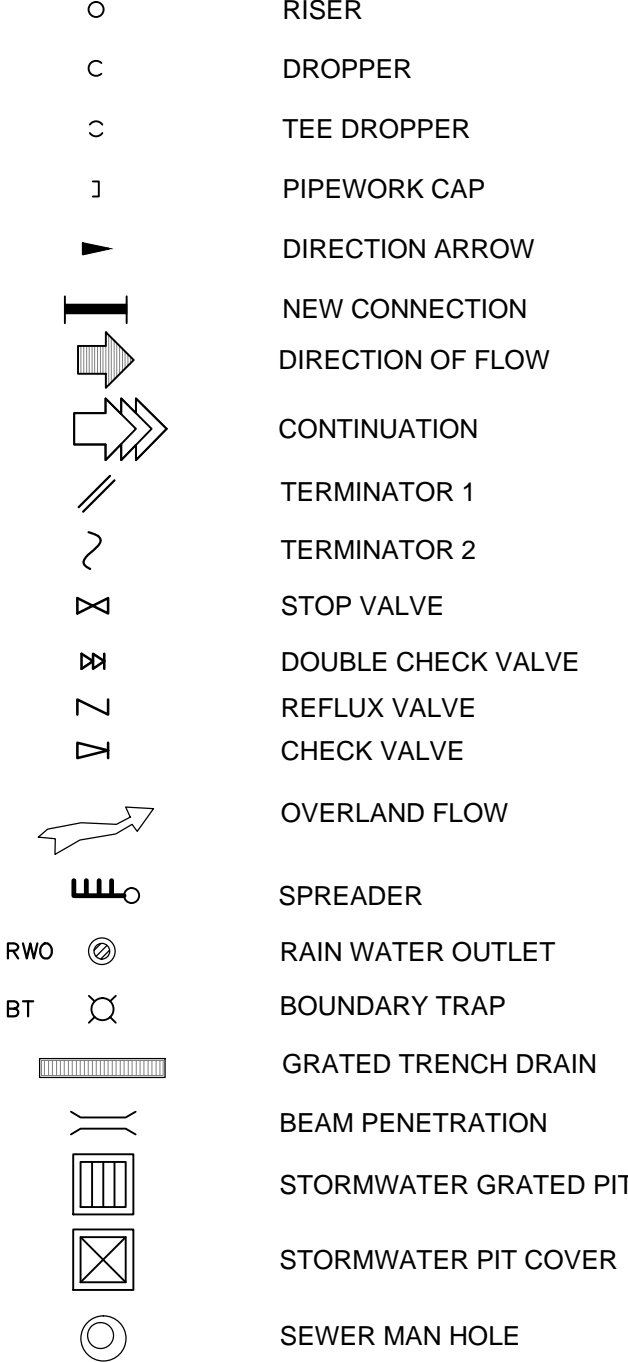
EXISTING SERVICES
REDUNDANT SERVICES
TO BE REMOVED
STORMWATER DRAINAGE
SUB-SOIL DRAINAGE
RAINWATER REUSE
POTABLE COLD WATER

ABBREVIATIONS, SYMBOLS AND LINETYPES IN THE LEGEND MAY NOT APPEAR ELSEWHERE ON THE DRAWINGS. THIS LEGEND SHOULD BE USED AS A GUIDE ONLY.

GENERAL NOTES

- DRAWINGS ARE DIAGRAMMATIC ONLY AND HAVE BEEN PREPARED FOR THE PURPOSE OF INDICATING THE DESIGN INTENT AND SCOPE OF WORKS OF THE HYDRAULIC SERVICES.
- IT IS THE RESPONSIBILITY OF THE BUILDER AND/OR PLUMBING SUBCONTRACTOR TO INVESTIGATE AND COORDINATE BEFORE AND DURING THE CONSTRUCTION PHASE ALL EXISTING SERVICES WHICH WILL EFFECT THE INSTALLATION OF THESE SERVICES.
- HYDRAULIC DRAWINGS ARE TO BE READ IN CONJUNCTION WITH THE HYDRAULIC SERVICES SPECIFICATION AND WITH RELEVANT ARCHITECTURAL, STRUCTURAL, MECHANICAL AND ELECTRICAL DRAWINGS.
- ALL WORK TO BE CARRIED OUT IN ACCORDANCE WITH THE RELEVANT CODES AND AUSTRALIAN STANDARDS.
- POSITION AND LEVELS OF AUTHORITIES MAINS AND/OR EXISTING SERVICES ARE INDICATIVE ONLY AND ARE TO BE CHECKED PRIOR TO COMMENCING ANY WORK. DO NOT SCALE FROM THIS DRAWING. REFER TO ARCHITECTURAL DRAWINGS FOR DIMENSION SETOUT.
-

SYMBOLS



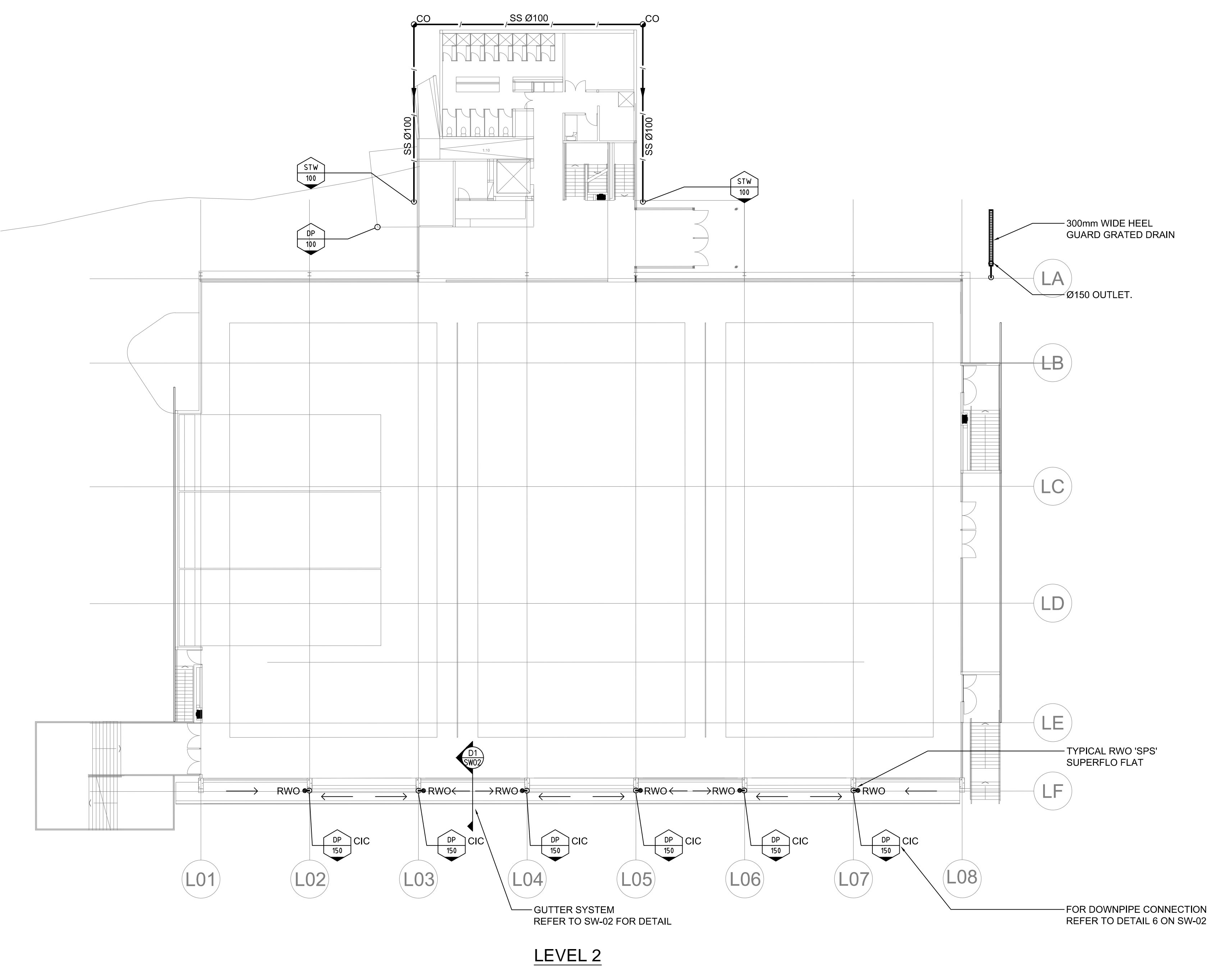
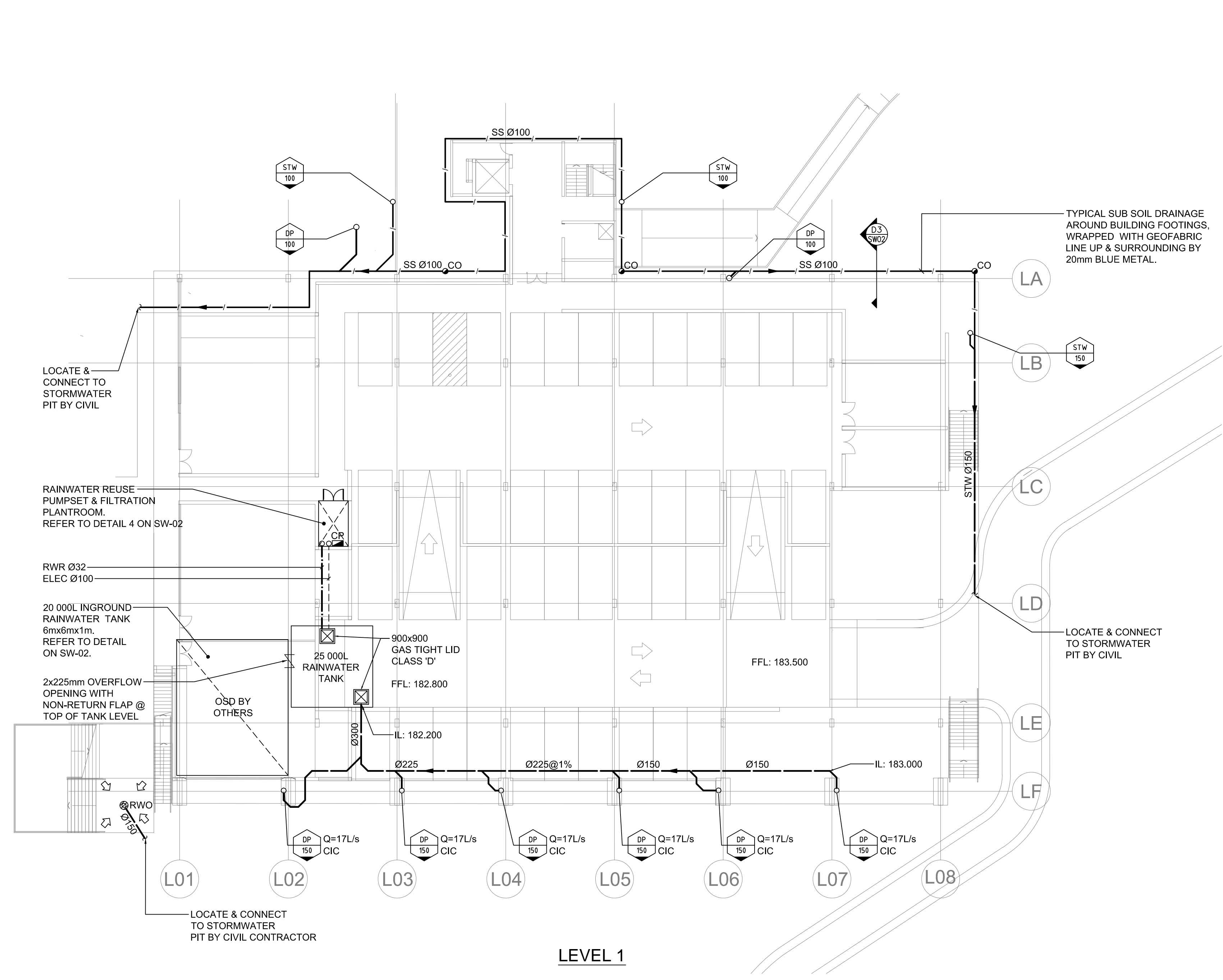
ABBREVIATIONS

| | | | |
|------|---------------------------|---------|-------------------|
| A/B | ABOVE | MM | MILLIMETERS |
| @ | AT | N.T.S | NOT TO SCALE |
| BO | BALCONY OUTLET | O/F | OVER FLOW |
| BT | BOUNDARY TRAP | % | PERCENTAGE |
| CIC | CAST IN COLUMN | RL | REDUCED LEVEL |
| CIS | CAST IN SLAB | RWH | RAIN WATER HEAD |
| CO | CLEAROUT | RWR | RAINWATER REUSE |
| CONT | CONTINUATION | RWO | RAINWATER OUTLET |
| CV | CHECK VALVE | RV | REFLUX VALVE |
| DCV | DOUBLE CHECK VALVE | S | SEWER |
| DIA | DIAMETER | SMH | SEWER MANHOLE |
| DP | DOWNPIPE | SS | SUB SOIL DRAINAGE |
| e | EXISTING | S/STEEL | STAINLESS STEEL |
| EL | ELECTRICAL CONDUIT | STW | STORMWATER |
| FW | FLOOR WASTE | SV | STOP VALVE |
| GA | GREASE ARRESTOR | SWP | STORMWATER PIT |
| HDPE | HIGH DENSITY POLYETHYLENE | TD | TUNDISH |
| H/L | HIGH LEVEL | U/S | UNDERSIDE |
| IL | INVERT LEVEL | UV | ULTRA-VIOLET |
| KIP | KERB INLET PIT | | |
| L | LITRE | | |
| L/L | LOW LEVEL | | |
| L/s | LITRES PER SECOND | | |
| m | METRES | | |
| MAX | MAXIMUM | | |
| MIN | MINIMUM | | |

DRAWING SCHEDULE

| DWG No. | Scale | Drawing Title |
|---------|----------|---|
| SW-00 | NTS | HYDRAULIC SERVICES COVER SHEET AND LEGEND |
| SW-01 | 1:200 | HYDRAULIC SERVICES MPSH LEVEL 1 & LEVEL 2 |
| SW-02 | AS SHOWN | HYDRAULIC SERVICES MPSH ROOF PLAN & DETAIL SHEET |
| SW-03 | 1:200 | HYDRAULIC SERVICES HOCKEY FIELD CAR PARK STORMWATER DRAINAGE LAYOUT |
| SW-04 | 1:200 | HYDRAULIC SERVICES HOCKEY FIELD STORMWATER DRAINAGE LAYOUT |

SERVICES ON THIS
DRAWING ARE
SHOWN OUT OF THE
STRATA UNLESS
NOTED OTHERWISE).



COPYRIGHT OF HARRIS PAGE & ASSOCIATES
Pty Ltd. All rights reserved. This drawing may not be
re-produced or transmitted in any form, or by any
means in part or in whole without permission from
HARRIS PAGE & ASSOCIATES Pty Ltd. Figured
dimensions shall be taken in preference to scaling.
The contractor shall check all dimensions on
drawings and site before commencing work.

| | | |
|-------|---------------|----------|
| | | |
| | | |
| | | |
| | | |
| A | DA SUBMISSION | 23.11.12 |
| ISSUE | AMENDMENT | DATE |

| | |
|--------------------|-------------------------------|
| REFERENCE DRAWINGS | |
| STRUCT | |
| MECH | |
| ELEC | |
| RCP | |
| ARCH | 12009_PLAN 01 & 12009_PLAN 02 |
| DISCIPLINE | DRAWING NUMBER |
| REV | DATE |

| |
|--------|
| CLIENT |
| |

ARCHITECT / PROJECT MANAGER

79 Myrtle Street Chippendale NSW 2008 AUSTRALIA
ph +61 2 9311 8222 fx +61 2 9311 8200 ABN 53 003 782 250

HYDRAULIC & FIRE SERVICES CONSULTANTS

HARRIS PAGE & Associates
PTY LIMITED
HYDRAULIC & FIRE CONSULTANTS
Level 2, 32 Carrington Street, Sydney NSW Australia 2000
Telephone: (02) 5622 1000 Fax: (02) 5622 5385
Email: info@harrispagelimited.com.au ABN 008 548 098

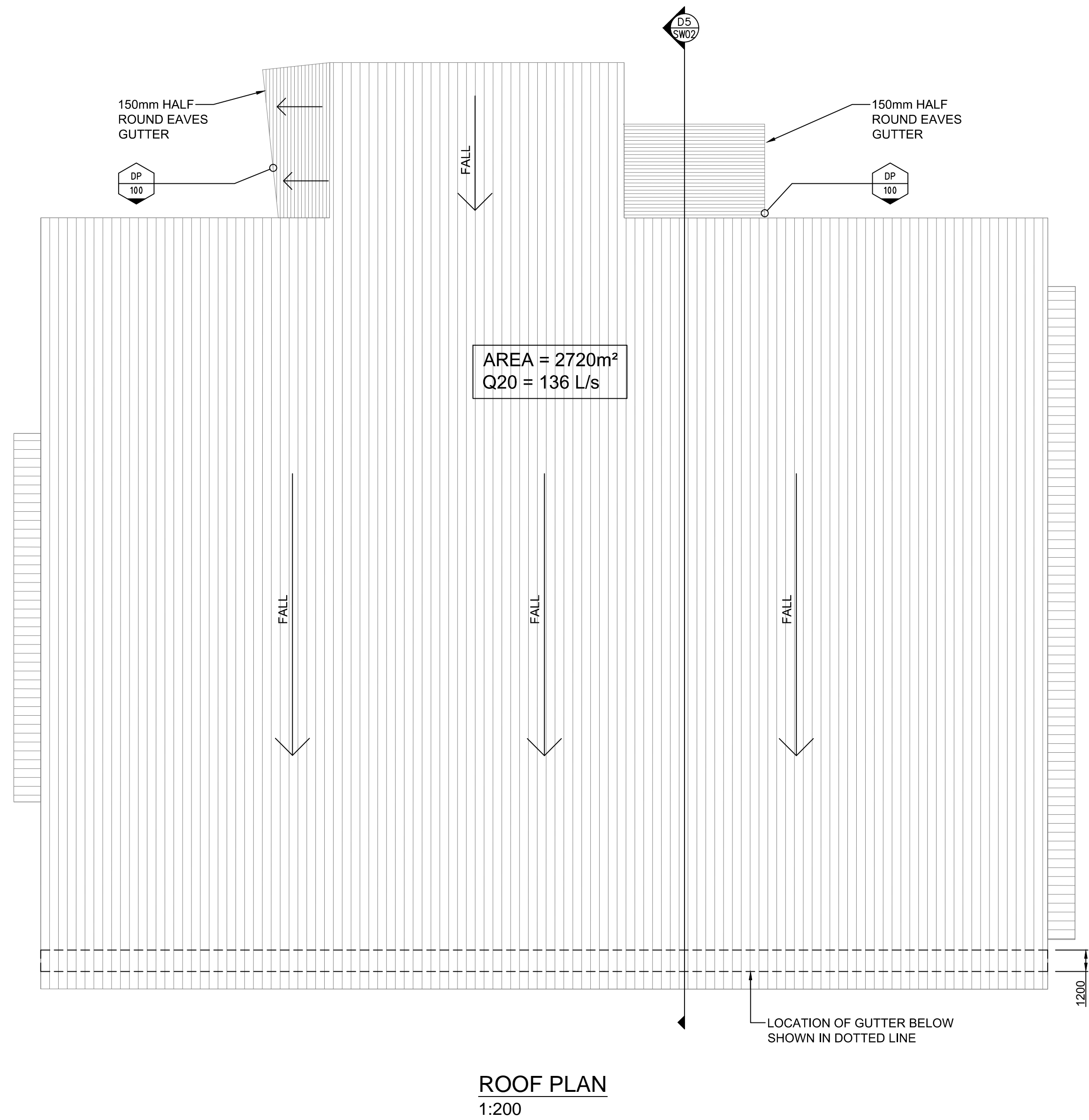
PROJECT

ABBOTSLEIGH
MULTI PURPOSE HALL
WAHROONGA NSW 2076

DRAWING TITLE

HYDRAULIC SERVICES
MPSH LEVEL 1 & LEVEL 2
STORMWATER DRAINAGE
LAYOUT

| | | | | |
|---------------------|-------|----------------------|-----------|---------------|
| DATE | DRAWN | CHECKED | NO IN SET | SCALE |
| NOV. 2012 | DC/EK | DP | 2 OF 6 | 1:200 @ B1 |
| PROJECT No. 5565 | | DRAWING No. SW-01 | | REVISION A |

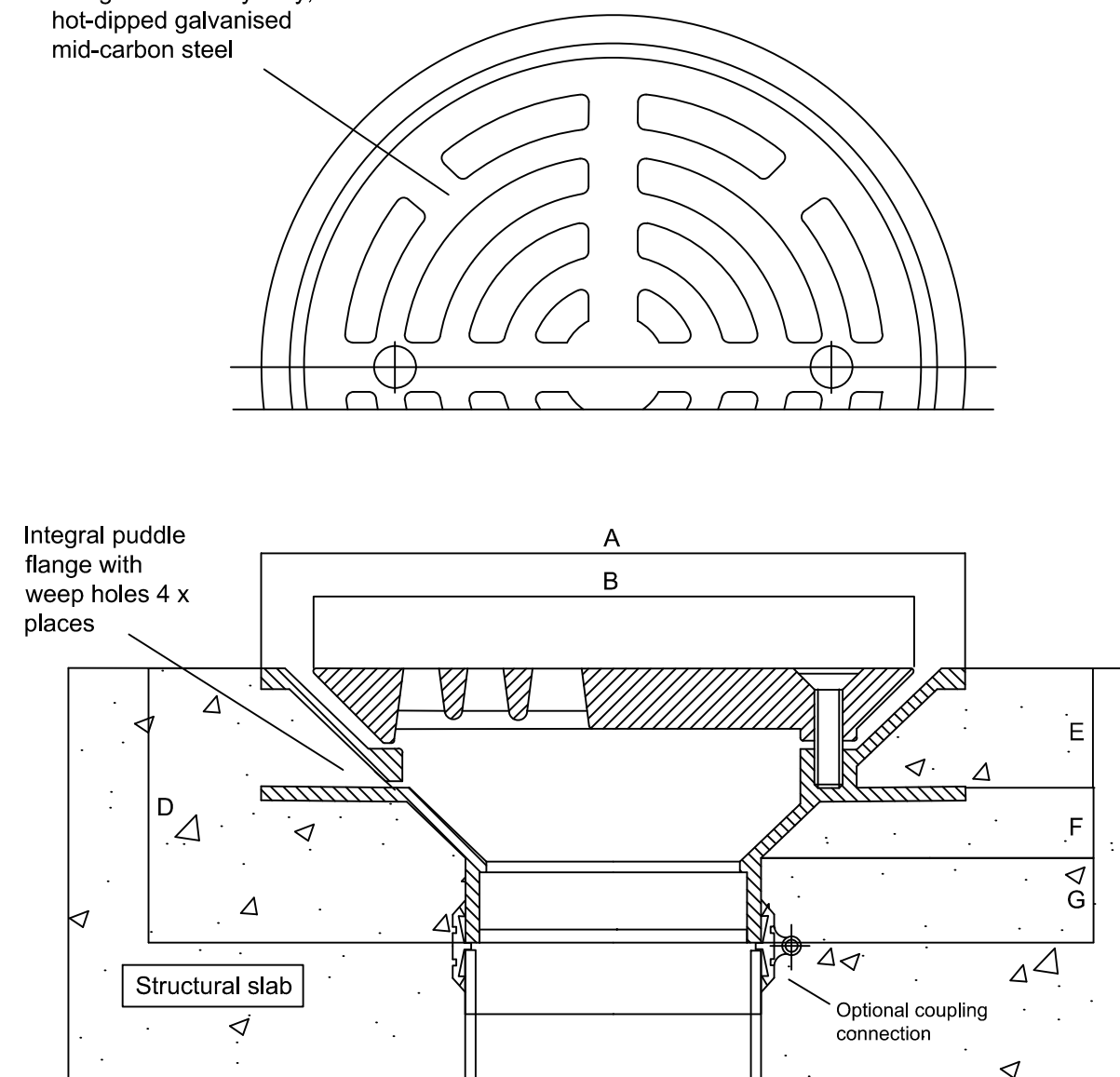


SPS Superflo Flat Grate RWO (1-Piece Grate, No Membrane Clamp)

Specification codes:
SIA150F (150mm Superflo CI body, galvanised flat grate)

Suggested applications:
Car park decks
Plant rooms
Pedestrian precincts

Flat grate in heavy duty,
hot-dipped galvanised
mid-carbon steel

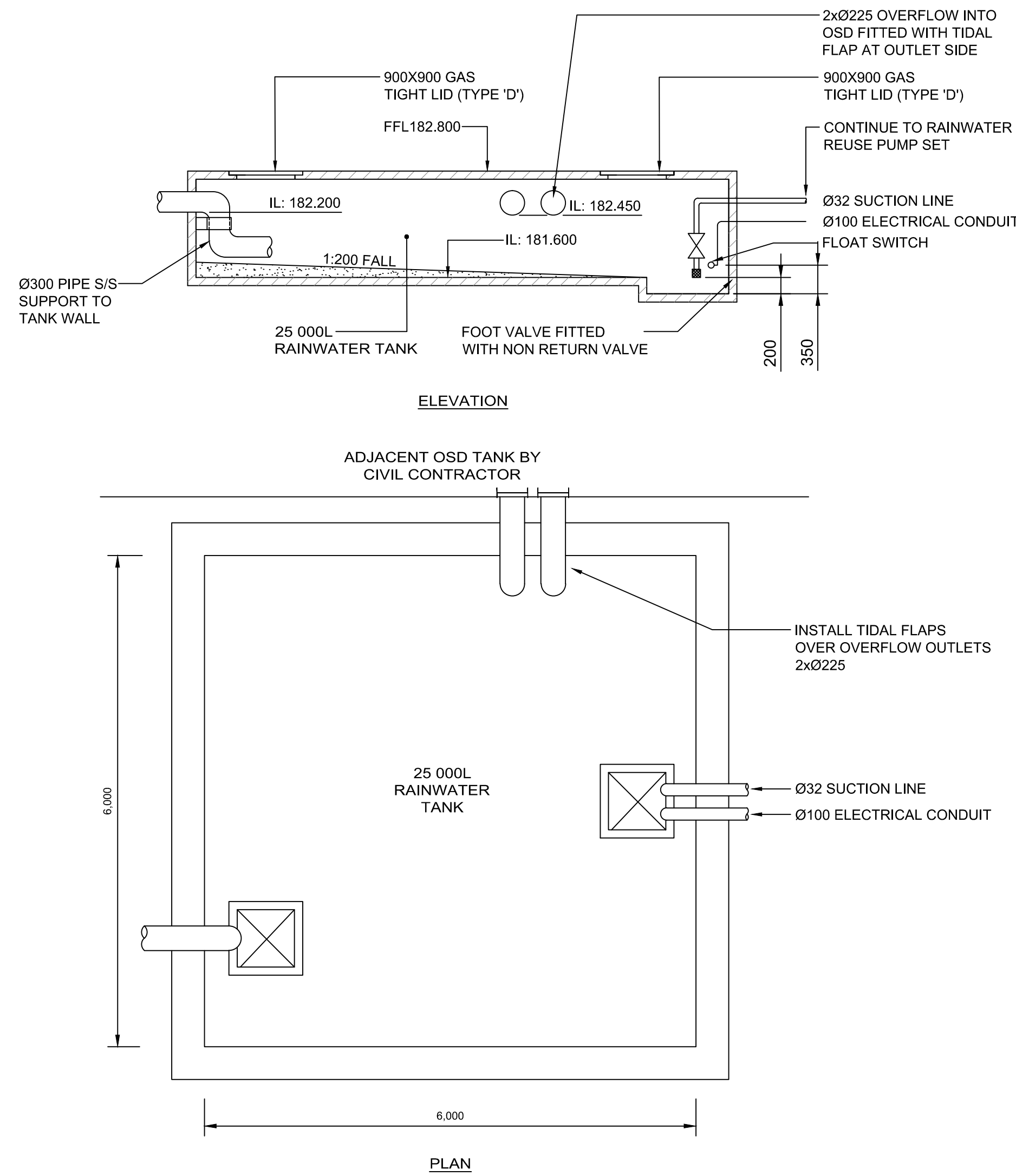


| N.B. | A | B | C | D | E | F | G | Flow rate* L/S |
|------------|-----|-----|-----|-----|----|----|----|----------------|
| SUPERFLO** | 400 | 290 | 160 | 143 | 66 | 39 | 38 | 17 |

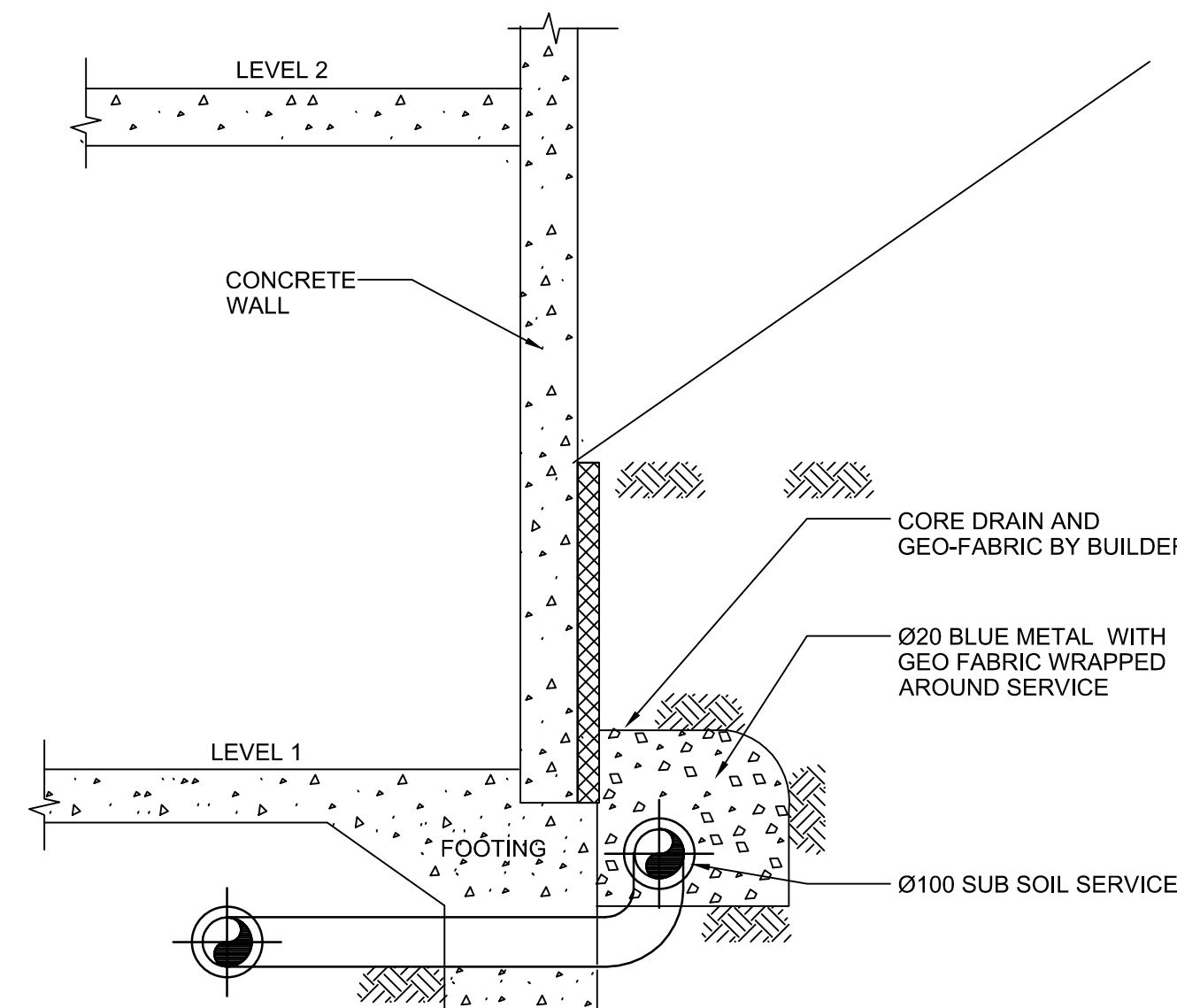
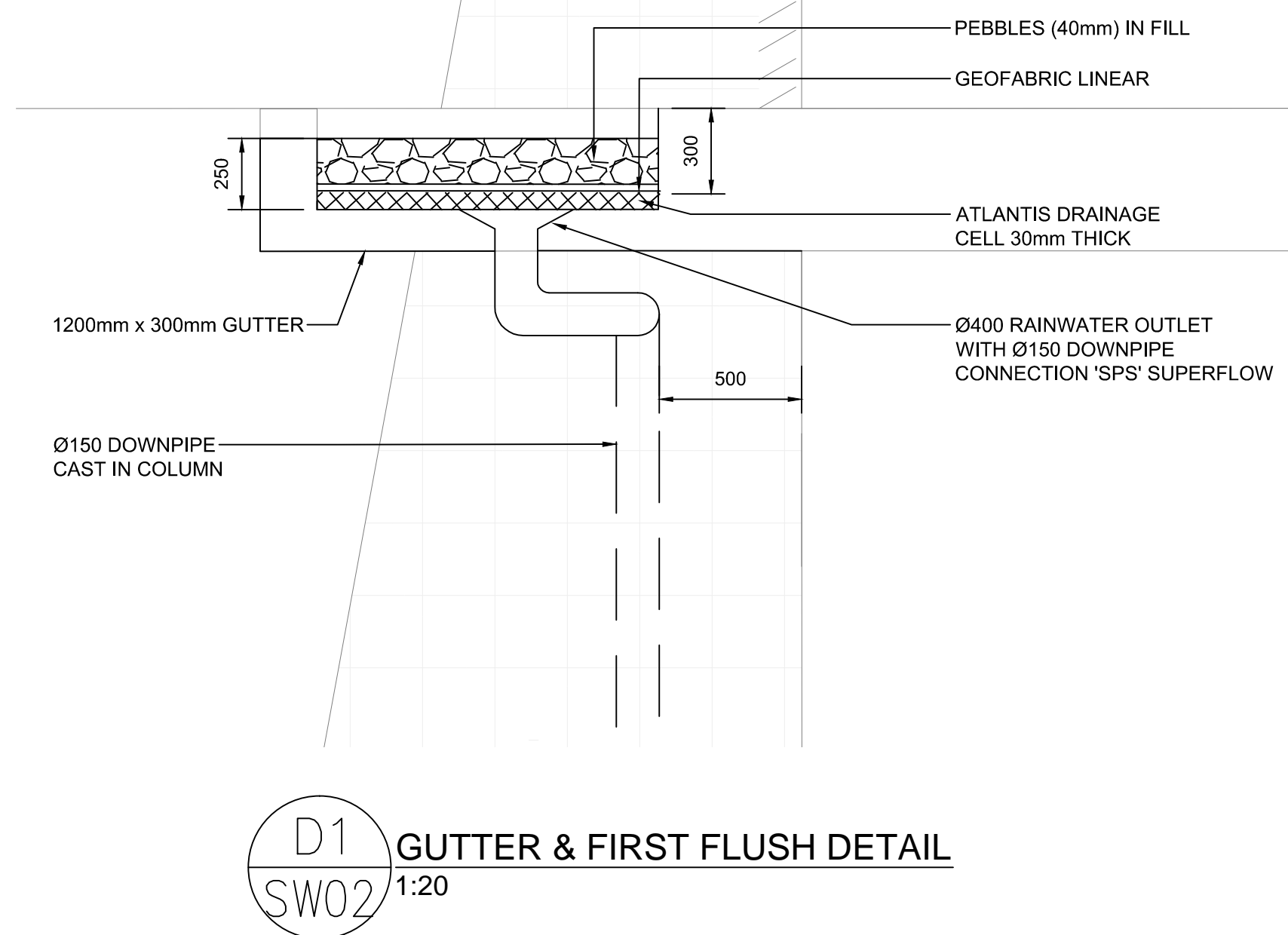
*Based on 50mm head of water above surface level. For further data refer to flow charts.
**Superflo available in 150mm outlet only.

Speciality Plumbing Supplies Pty Ltd
Tel: (02) 9416 8031 Fax: (02) 9416 7614 E-mail: sps@bigpond.net.au

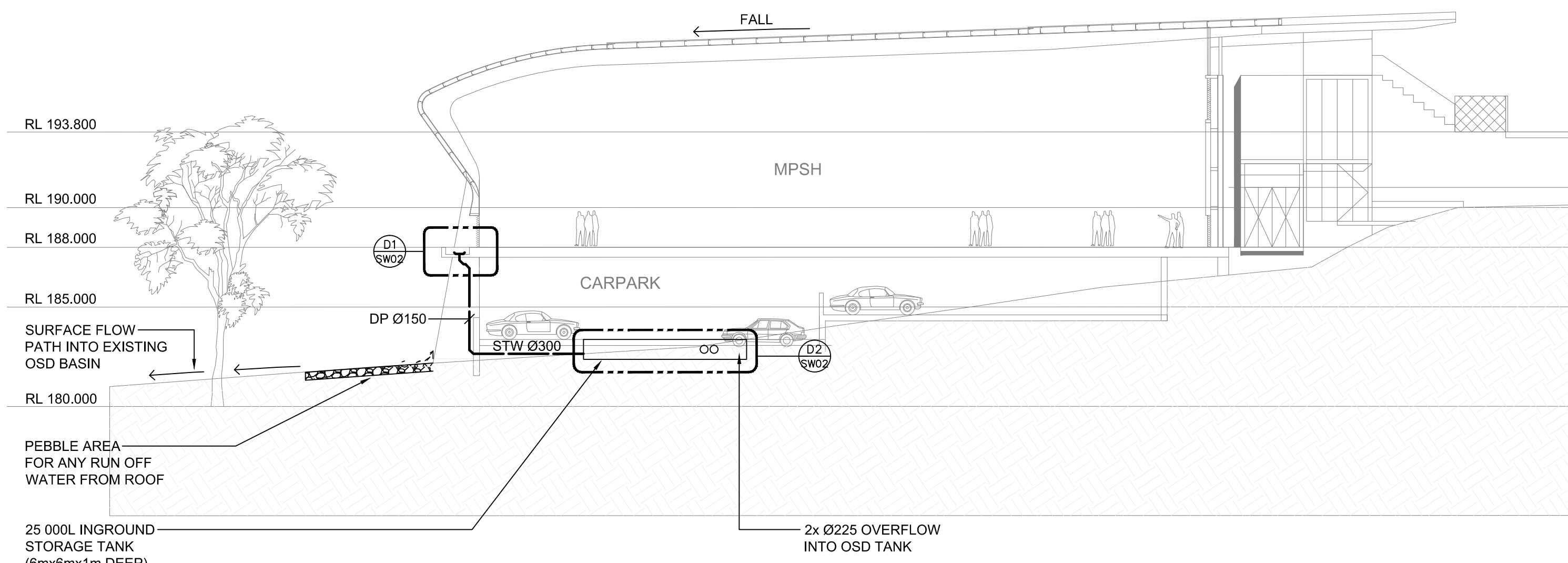
D6 SW02 RAINWATER OUTLET DETAIL 1:200



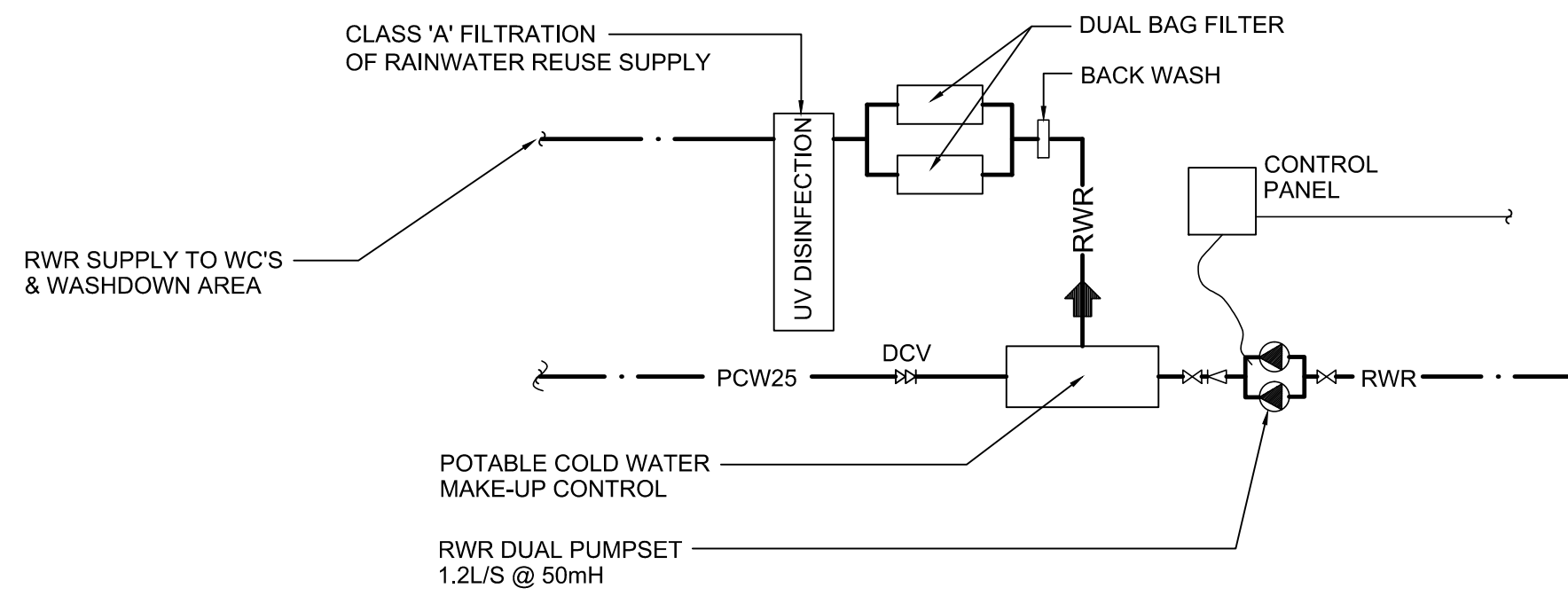
D2 SW02 RAINWATER TANK DETAIL 1:50



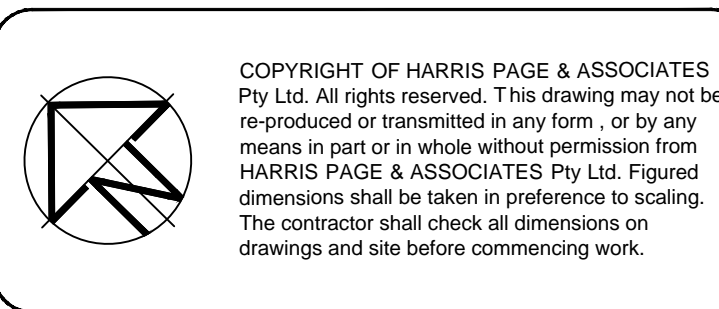
D3 SW02 SUB SOIL WATER PROTECTION DETAIL N.T.S



D5 SW02 CROSS SECTION 1:200



D4 SW02 RAINWATER REUSE PUMPSET DETAIL N.T.S



COPYRIGHT OF HARRIS PAGE & ASSOCIATES Pty Ltd. All rights reserved. This drawing may not be re-produced or transmitted in any form, or by any means in part or in whole without permission from HARRIS PAGE & ASSOCIATES Pty Ltd. Figured dimensions shall be taken in preference to scaling. The contractor shall check all dimensions on drawings and site before commencing work.

| ISSUE | AMENDMENT | DATE |
|-------|---------------|----------|
| A | DA SUBMISSION | 23.11.12 |

| DISCIPLINE | DRAWING NUMBER | REV | DATE |
|------------|-----------------|-----|----------|
| STRUCT | | | |
| MECH | | | |
| ELEC | | | |
| RCP | | | |
| ARCH | 12009_plan roof | | 19.11.12 |

| CLIENT |
|--------|
| |

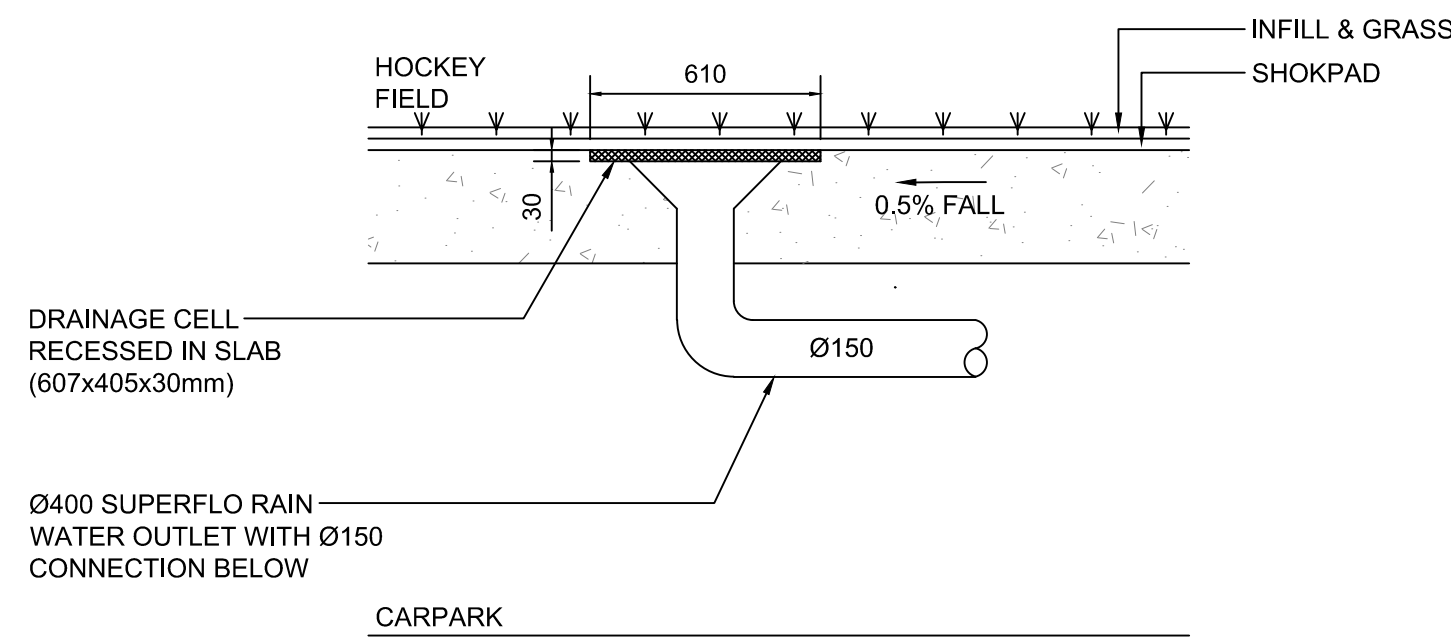
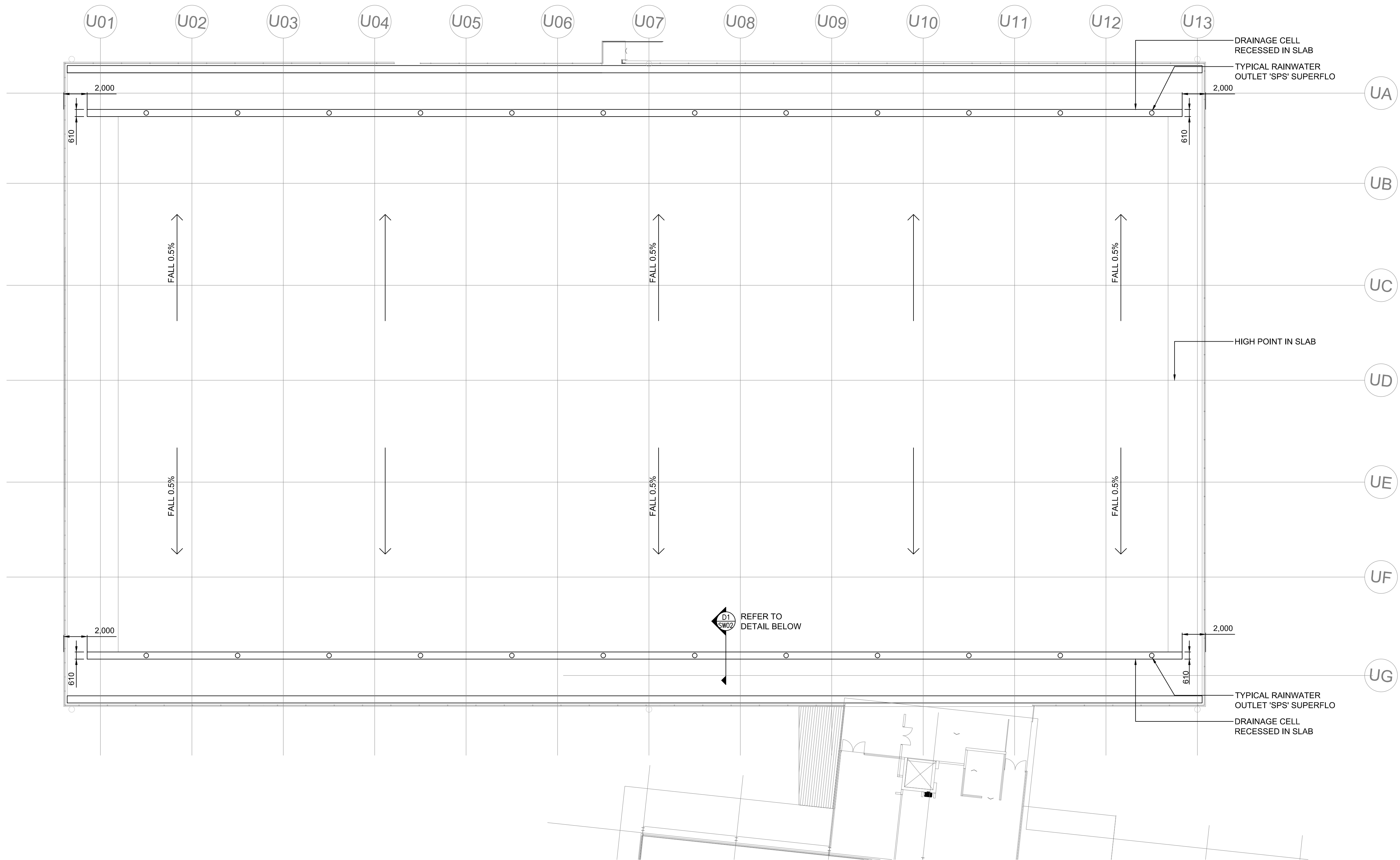
ARCHITECT / PROJECT MANAGER
AJ+C
ALLEN JACK+COTTIER
79 Myrtle Street Chippendale NSW 2008 AUSTRALIA
ph +61 2 9311 8222 fx +61 2 9311 8200 ABN 53 003 782 250

HYDRAULIC & FIRE SERVICES CONSULTANTS
HARRIS PAGE & Associates
PTY LIMITED
HYDRAULIC & FIRE CONSULTANTS
Level 2, 32 Carrington Street, Sydney NSW Australia 2000
Telephone (02) 9692 1000 Fax (02) 9692 5385
Email: info@harrispage.com.au ABN 008 548 098

PROJECT
**ABBOTTSLEIGH
MULTI PURPOSE HALL
WAHROONGA NSW 2076**

DRAWING TITLE
**HYDRAULIC SERVICES
MPSH ROOF PLAN
& DETAIL SHEET**

| DATE | DRAWN | CHECKED | No IN SET | SCALE |
|----------------------------|-----------------------------|----------------------|-----------|------------|
| NOV. 2012 | DC/EK | DP | 3 OF 6 | 1:100 @ B1 |
| PROJECT No. 5565 | DRAWING No. SW-02 | REVISION A | | |



HOCKEY FIELD DRAIN SYSTEM
1:20

| | | |
|-------|---------------|----------|
| | | |
| | | |
| | | |
| | | |
| A | DA SUBMISSION | 23.11.12 |
| ISSUE | AMENDMENT | DATE |

| | | | |
|--------------------|----------------|-----|----------|
| REFERENCE DRAWINGS | | | |
| STRUCT | | | |
| MECH | | | |
| ELEC | | | |
| RCP | | | |
| ARCH | 12009_PLAN 04 | | 19.11.12 |
| DISCIPLINE | DRAWING NUMBER | REV | DATE |

| |
|--------|
| CLIENT |
|--------|

ARCHITECT / PROJECT MANAGER

AJ+C
ALLEN JACK+COTTIER

79 Myrtle Street Chippendale NSW 2008 AUSTRALIA
ph +61 2 9311 8222 fx +61 2 9311 8200 ABN 53 003 782 250

HYDRAULIC & FIRE SERVICES CONSULTANTS

HARRIS PAGE & Associates
PTY LIMITED

HYDRAULIC & FIRE CONSULTANTS
Level 2, 32 Carrington Street, Sydney NSW Australia 2000
Telephone: (02) 5622 1000 Fax: (02) 5622 5385
Email: info@harrispagelimited.com.au ABN 008 548 098

PROJECT

**ABBOTTSLEIGH
MULTI PURPOSE HALL
WAHROONGA NSW 2076**

DRAWING TITLE

**HYDRAULIC SERVICES
HOCKEY FIELD
STORMWATER DRAINAGE
LAYOUT**

| | | | | |
|-------------|-------------|----------|-----------|------------|
| DATE | DRAWN | CHECKED | No IN SET | SCALE |
| NOV. 2012 | DC/EK | DP | 5 OF 6 | 1:200 @ B1 |
| PROJECT No. | DRAWING No. | REVISION | | |
| 5565 | SW-04 | A | | |